

Towards empathy is a visual exploration project of the concept of empathy that combines psychology and photography. My practice primarily focuses on the photographic medium with a visual artistic approach. In my research, I explore feelings and emotions and I am interested in the possibility of transcending the photographic image through three-dimensional aspects.

In this project, I seek to establish a connection with humans through a process of psychological portraiture, and then transform the image into *sculptural objects* through an experimentation with *crystals* that I grow myself using salt applied to prints on textiles. As a physical metaphor, the *crystals are capable of materializing the duality of emotions* for me. Similarly, emotions play a role in our lives by *nurturing or distorting us*. The crystals that I grow on the fabric come from salt, a complex and dual material that can preserve, nourish, but also destroy. This aspect is reflected in the aesthetics of the sculptural piece where I try to *monstrify* the image *through salt crystals*.

I create psychological portraits using *color filters*. Each person is *synesthetically interpreted and translated* into a specific color that intuitively evokes their mind. It is an extremely intuitive but also very precise process. Each *«chromatic portrait»* is a human encounter in which feelings are experienced and shared. I seek a suspended and meditative moment in which the person's soul can express itself. I work with layers of complexity of the mind, trying to capture the hidden meaning of the images.

My process develops in *3 parts*: the human encounter with the other person around the portrait, the translation of the person into color, and the materialization of the intangibility of emotions through the formation of crystals on the prints. My goal is to create a work that is capable of translating emotions, feelings, and sensations into a plastic form.

Talking about empathy and emotions becomes a *political act of expression* because I believe that emotions can play a political role by working on people's sensitivity.

Empathy is seen here above all as a tool for opening oneself to otherness and understanding the other, even the monstrosity of emotions.

#### **Acknowledgements**

- Shortlisted project for the Prix Photographie & Sciences in collaboration with ADAGP and CNRS, Toulouse, France, 2021.

- Project started while in residence at the Cité Internationale des arts, 2021.

# Towards empathy

2021 - in progress



Poush, Paris, May 2023. Installation view.

Print on textile, embedded salt crystals, plexiglass box, 40x55x5cm. Unique piece.





LeNeuf Sinibaldi gallery, Paris october 2022. Installation view.  
Print on textile, embedded salt crystals, plexiglass box, 30x40x5cm. Unique piece.



Poush, Paris, march 2023. Atelier's view.  
Prints on textile, embedded salt crystals, color gelatines, plexiglass boxes, fine art prints on wooden frames.



Poush, Paris, march 2023. Atelier's view.  
Prints on textile, embedded salt crystals, plastic containers, neon light, transparent paper, table.





The materiality of the unique pieces composed of salt crystals is extremely lively in reaction to light. Details of the prints on fabric, salt crystals that I grow with salt directly on the prints, variable size. Unique pieces. Thanks to this **video** you can have an overview of how the artworks react to light, in particular to Anna's portrait: <https://youtube.com/shorts/nAdzxPjjvRE?feature=share>





La Comete, Paris, November 2022. Variable dimension installation, Print on textile, embedded salt crystals, neon light, transparent paper.



Poush, Paris, march 2023. Print on textile, embedded salt crystals, plexiglass box, 30x40x5cm. Unique piece.





Poush, Paris, may 2023.  
Print on textile embedded salt crystals, plexiglass box, 35x45x5cm. Unique piece.



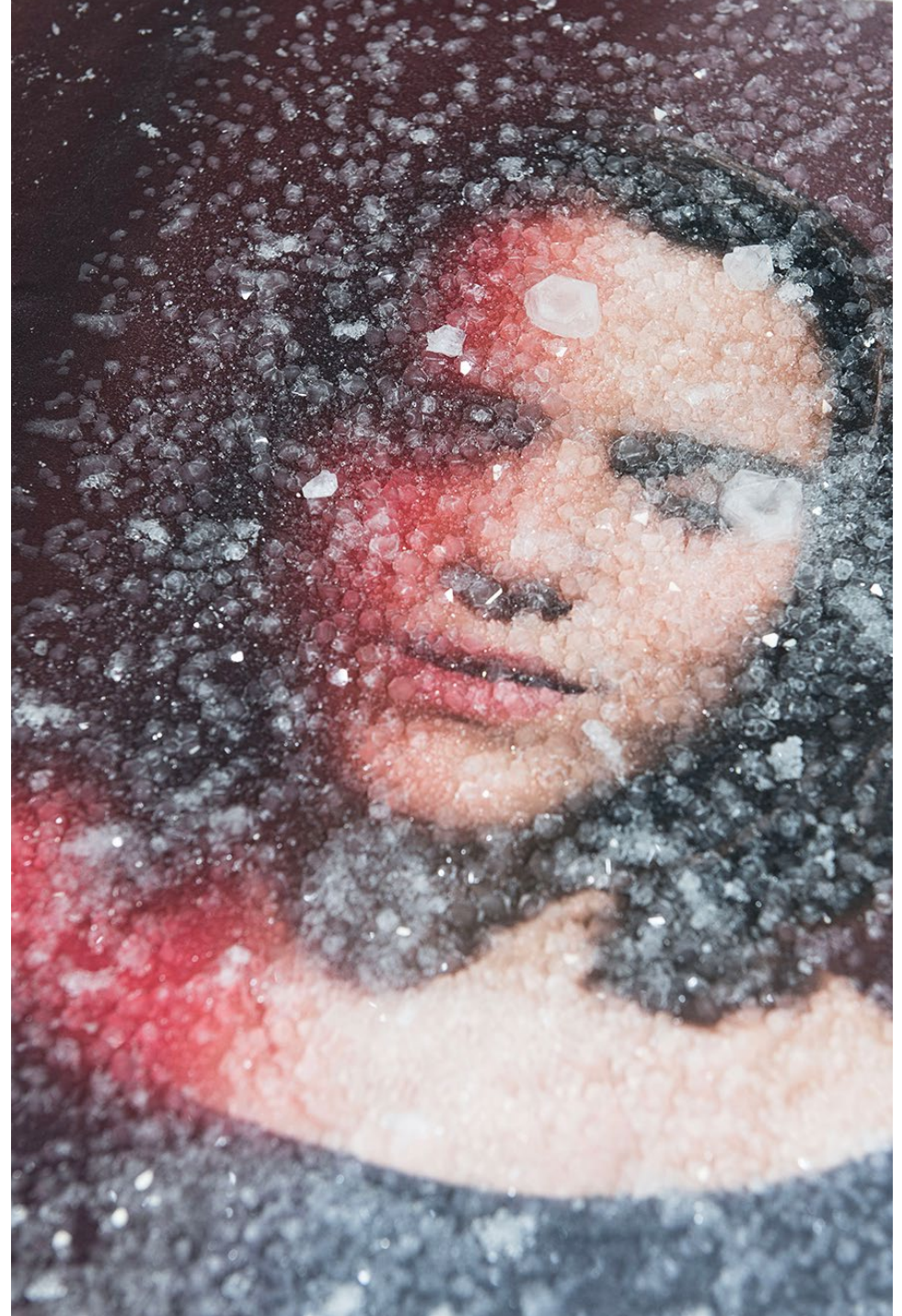
Poush, Paris, may 2023.  
Print on textile, embedded salt crystals, plexiglass box, 45x55x5cm. Unique piece.





Details of the prints on fabric, salt crystals that I grow with salt directly on the prints, variable size. Unique pieces.





Details of the prints on fabric, salt crystals that I grow with salt directly on the prints, variable size. Unique pieces.





Details of the prints on fabric, salt crystals that I grow with salt directly on the prints, variable size. Unique pieces.





Details of the chromatic portraits. These are psychological portraits made with the help of colour filters gelatines. Each person is interpreted and translated synesthetically into a specific colour that intuitively evokes their spirit.





# IRIDESCENCE

**A composition for voice, machines and colours**  
Performance in collaboration with sound artist Thea Soti.

2022

Poush Manifesto, Paris, France, June 2022.  
Video installation, live audio composition, 15'

A live sound and video performance, conceived with artist Thea Soti, in which my abstract colour images were projected onto a video following a choreographed sequence inspired by my project Towards Empathy.